



# Multi-Purpose



**SURVEILLANCE**

**SEARCH & RESCUE**

**FIRE FIGHTING**

**TOWING**

**EMERGENCY RESPONSE**



# Diesel-electric power



**4.25 MW Power Plant**  
**2x 1800 kW Engines (4900 HP)**  
**Active Front End Drivers (AFE)**  
**Black Out Prevention System (BPS)**  
**Generator Protection Modules (GPM500)**  
**Redundant Power Systems**



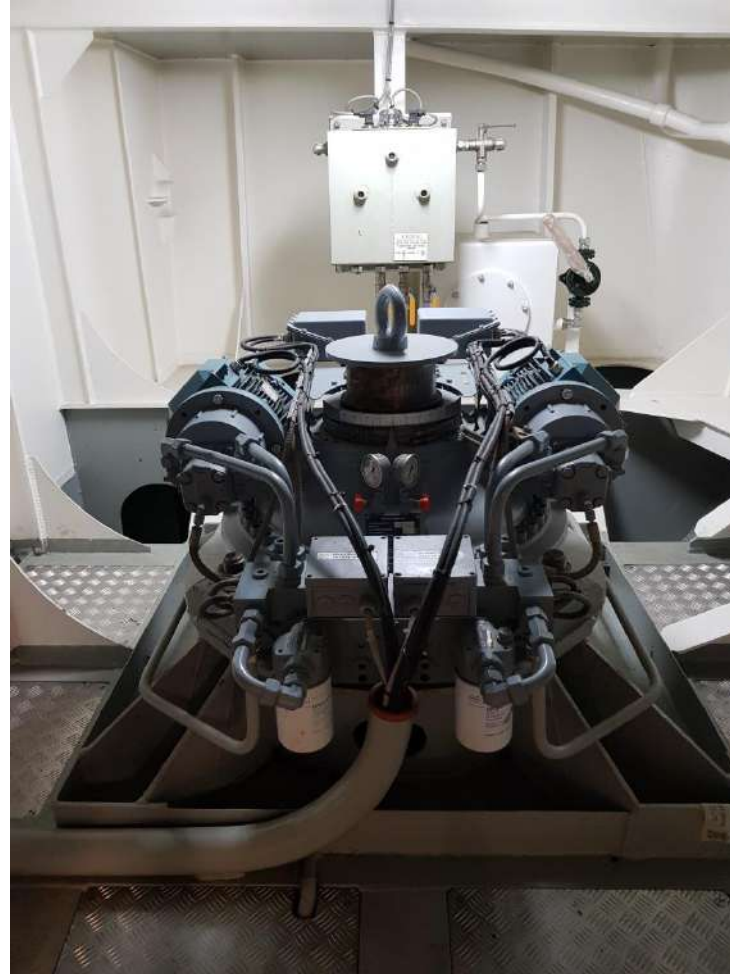
# Integrated Monitoring System



**+1000 IAMCS Channels**  
**EO Ready**  
**Duty Alarm System**



# High Standards



**Strengthened Hull Ice Class 1C  
Stainless Steel lining  
Rotary Vane Steering Gear**



# Efficient & Maneuverable



- +18 Knots Speed
- 300 kW RIM Bow Thrusters
- 160kW RIM Stern Thrusters
- 2.5m FIN Stabilizers
- 2x light-weight Rotary Steering Gears
- Heeling Tanks



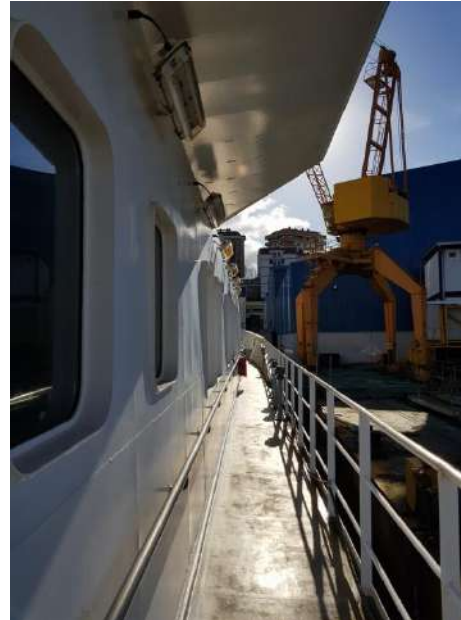
QUALITY ASSURANCE  
ISO 9001:2015

ENVIRONMENTAL  
ISO 14001:2015

HEALTH and SAFETY  
OHSAS 18001:2007



# Deck Equipment



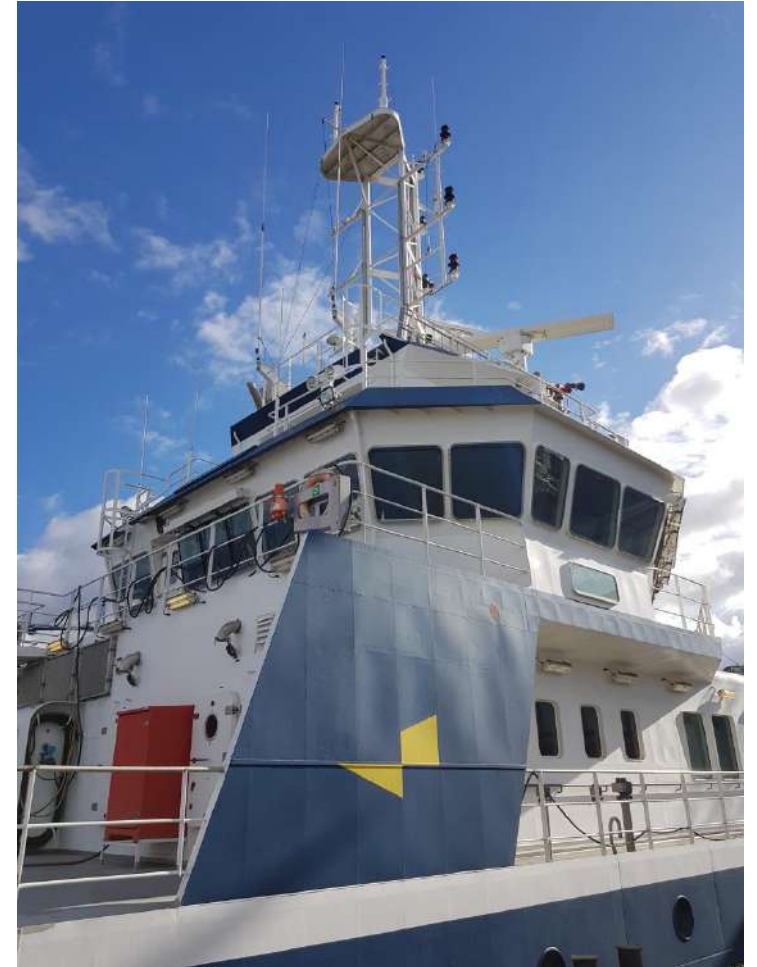
**1x 12.5 ton Towing Winch, 51 ton brake**  
**1x 8.7 ton Towing Winch, 35 ton brake**  
**1x 10m Deck Crane 3T/6T**  
**1x 10 ton Lifting Platform of 5mx3.8m**



# Bridge



**4 Control Stations  
Unrestricted Navigation Full Equip  
Sound Surveillance System  
Excellent Visibility**





# Top of the class finishing



**Top acoustic and thermal insulation**  
**Individual cabins & private bathrooms**  
**Wide spare rooms and gym**  
**A/C & central heating**  
**Hot water spare radiators in cabins**  
**Dimmable lightning**



QUALITY ASSURANCE  
ISO 9001:2015



ENVIRONMENTAL  
ISO 14001:2015



HEALTH and SAFETY  
OHSAS 18001:2007



***Thank You!***